



STATE OF WYOMING CORNER RECORD

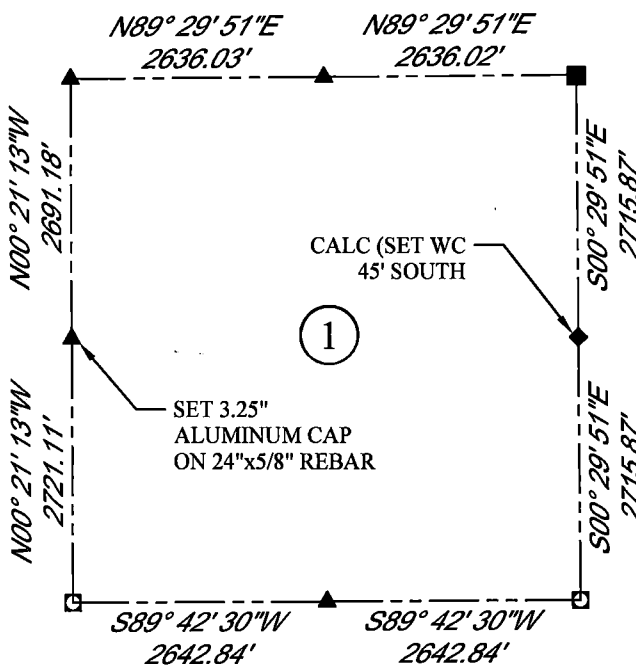
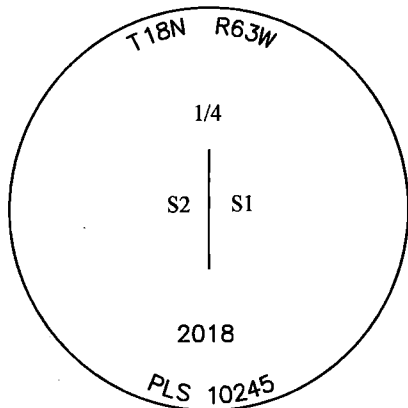
(In compliance with the CORNER PERPETUATION AND FILING ACT, Wyoming Statutes, 1997 Section 33-29-140, et. seq., and the Rules and Regulations of the Board of Registrations for Professional Engineers and Professional Land Surveyors)

WEST QUARTER CORNER SECTION 1, T. 18 N., R. 63 W., 6TH P.M., LARAMIE COUNTY, WYOMING

GLO: SET A SANDSTONE 18X12X4, 10 IN. DEEP MARKED 1/4 ON THE N. SIDE FOR 1/4 SEC. CORNER.
SET: 3.25" ALUMINUM CAP, 16" BELOW SURFACE IN FARM FIELD MARKED AS SHOWN. NO REFERENCE MARKERS COULD BE SET.



SCALE: 1" = 2000'
 NORTH DETERMINED BY
 G.P.S OBSERVATIONS



LEGEND:

- FOUND BLM CAP
- FOUND USFS CAP
- FOUND STONE
- ◻ FOUND PRIVATE MONUMENT
- ◆ CALCULATED POSITION
- ▲ SET MONUMENT (LS10245)
- SECTION LINE

DATE OF FIELD WORK: 09/25/2018 OFFICE REFERENCE: 746049 ----

CROSS INDEX DIAGRAM

1	2	3	4	5	6	7	8	9	10	11	12	13	14	15	16	17	18	19	20	21	22	23	24	25	
A																									B
B																									C
C			6			5				4				3					2						D
D																									E
E																									F
F																									G
G			7			8				9				10					11						H
H																									I
I																									J
J																									K
K																									L
L			18			17				16				15					14						M
M																									N
N																									O
O																									P
P			19			20				21				22					23						Q
Q																									R
R																									S
S																									T
T			30			29				28				27					26						U
U																									V
V																									W
W																									X
X			31			32				33				34					35						Y
Y																									Z
Z	1	2	3	4	5	6	7	8	9	10	11	12	13	14	15	16	17	18	19	20	21	22	23	24	25

WOOD
 2615 AVIATION DRIVE
 SHERIDAN, WY 82801
 PH: 307-675-6400



THIS CORNER RECORD WAS
 PREPARED BY ME OR UNDER
 MY DIRECTION AND
 SUPERVISION,
 SEAL AND SIGNATURE

